



Headteacher: Mr M Currie
Deputy Headteacher: Mr L Clarke
Telephone: 01622 752161
E-mail: sbps_office@swale.at

Website: www.southboroughprimary.org.uk
Twitter: @sbpsmaidstone
Facebook: sbpsmaidstone

A Learning Ladder for Life

26th February 2024

Dear Parents and Carers,

Mark your calendars! Parent consultations for Nursery to Year 6 are happening soon, and we want to make sure you have all the important details.

Dates and Times:

- Wednesday, March 20th: 3:30pm - 7:00pm
- Thursday, March 21st: 3:30pm - 6:00pm

Location:

- All consultations will be held in your child's classroom.
- Please enter through the school office, where someone will guide you to the right room.

Planning Your Visit:

- To help you find your child's classroom, a map is available on page 2 of this letter.
- Please be punctual, as late arrivals may not be accommodated due to scheduling.
- Each consultation is 10 minutes long. Feel free to arrive early to browse your child's work.

Additional Needs Support:

- Mrs. Fulcher (SENCO) is available to discuss your child's additional needs.
- If you'd like Mrs. Fulcher to join your meeting, please indicate this when booking your appointment.

Booking Your Appointment:

- Appointments must be booked online through the School Cloud system.
- <https://southboroughpri.schoolcloud.co.uk/> (click [here](#) to book your appointment)
- A step-by-step guide to accessing School Cloud is available here: [\[Link to guide\]](#)
- **Booking opens at 10:00am on 28th February at 10am and closes on 13th March at 10am.**
- Confirmations will be sent via email. Check your junk or spam folder if you don't see it.
- Phone bookings are available after online booking opens, but online booking is faster and easier.

We encourage you to book your appointment as soon as possible.

We look forward to meeting you and discussing your child's progress!

Yours sincerely,

Mr L Clarke
Headteacher

Stagshaw Close, Postley Road, Maidstone, Kent, ME15 6TL

A member of Swale Academies Trust

Registered Office: Ashdown House, Johnson Road, Sittingbourne, Kent, ME10 1JS



Wellbeing Award
for Schools

2021-2024

Registered in England No: 07344732



South Borough Primary School

A MEMBER OF SWALE ACADEMIES TRUST

Headteacher:
Mr M Currie

Deputy Headteacher:
Mr L Clarke

Telephone:
01622 752161

E-mail:
sbps_office@swale.at

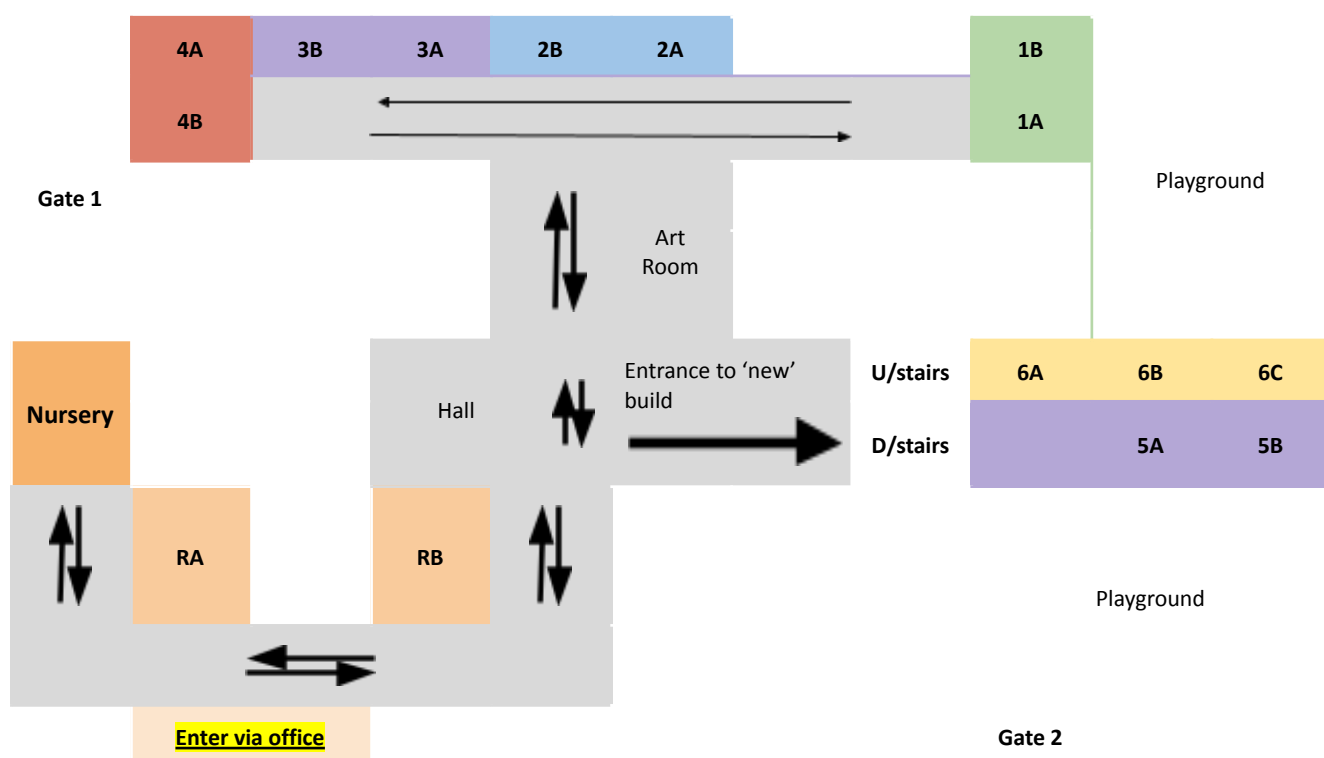
Website: www.southboroughprimary.org.uk

Twitter: @sbpsmaidstone

Facebook: sbpsmaidstone

A Learning Ladder for Life

Map of Classrooms



Stagshaw Close, Postley Road, Maidstone, Kent, ME15 6TL

A member of *Swale Academies Trust*

Registered Office: Ashdown House, Johnson Road, Sittingbourne, Kent, ME10 1JS



Wellbeing Award
for Schools

2021-2024

Registered in England No: 07344732